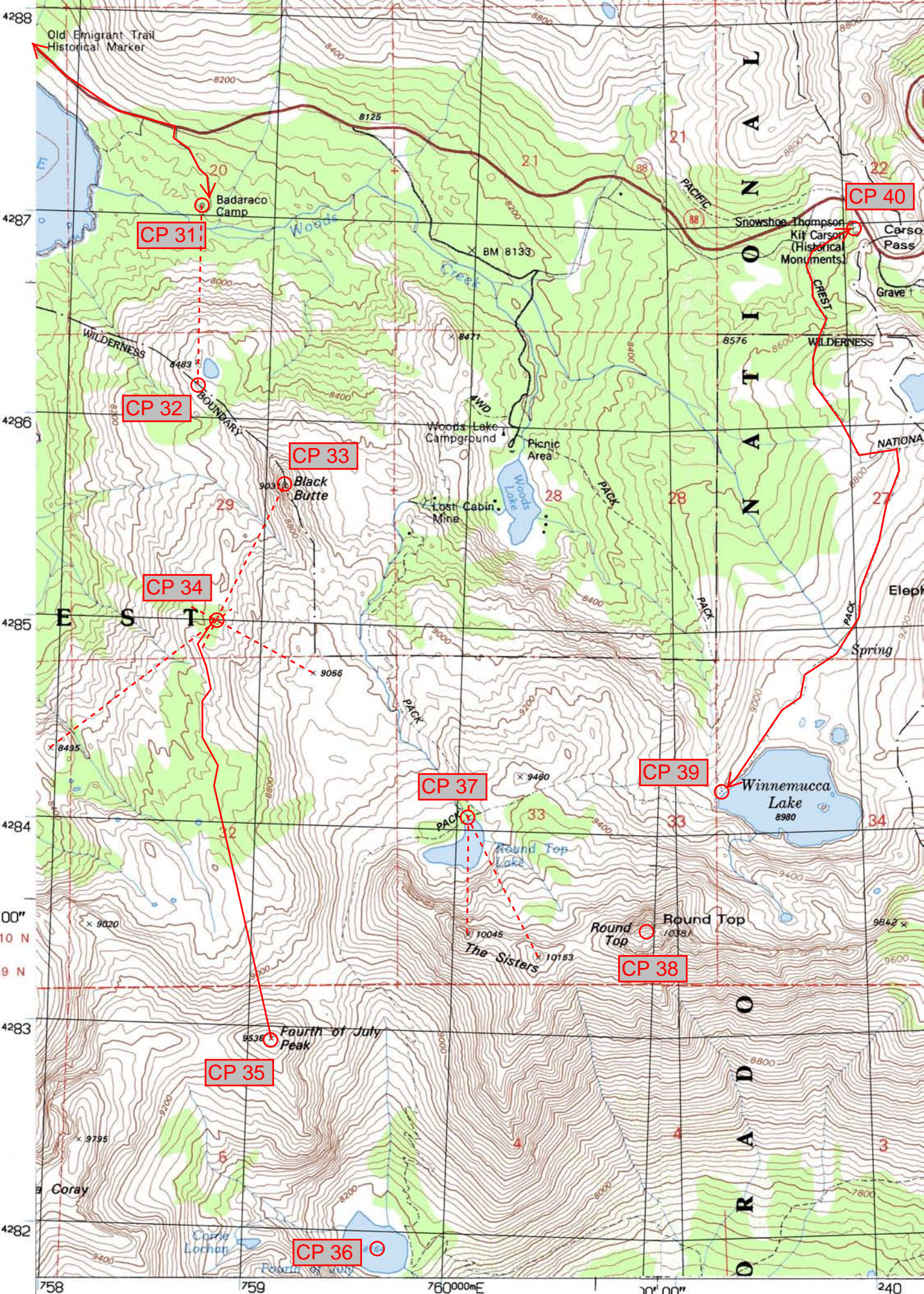


### Challenge 4. – Caples Lake to Carson Pass.

Follow in the footsteps of Snowshoe Thompson and Kit Carson as you head to Carson Pass and summit one of the highest peaks on the event.

Check Point	Instruction	Question	Answer
CP 31	Find Badaraco Camp	What is the distance by road in miles from Caples Lake Campground to Badaraco Camp	2.10 miles
CP 32	From Bardaraco Camp follow a bearing of 182° from True North to the Wilderness Boundary Line.	What is the highest elevation you reach on this bearing?	8483 feet
CP 33	Follow the Wilderness Boundary to the peak of Black Butte	Give the UTM of Black Butte peak.	0759090E 4285680N
CP 34	From Black Butte plot a bearing of 207° TN From the peak 9055 plot a bearing of 298.5° TN From the peak 8495 plot a bearing of 52.5° TN	What is the UTM at the intersection of these 3 bearings?	0758770E 4285000N
CP 35	From CP 34 find the shortest route that crosses the least number of contour lines to get to Forth of July Peak.	How many contour lines were crossed?	23
CP 36	From Fourth of July Peak drop down to Fourth of July Lake.	What is the difference in elevation between the Peak and the Lake?	1372 feet
CP 37	From Fourth of July Lake follow the nearest Pack Trail North until it crosses the first stream.	Give the True North bearings with at this stream crossing to The Sisters	180° 153.5°
CP 38	Find the highest point on the map.	What is the elevation of this point?	10381 feet
CP 39	Find the trail intersection on the NW side of Winnemucca Lake.	What is the elevation of this intersection?	8960 feet
CP 40	Find the Historical Monuments at Carson Pass.	How many miles by trail is the shortest route to the Historical Monuments?	2.17 miles
Rest Stop	<b>Go to <a href="http://www.ARNavigSupplies.com">www.ARNavigSupplies.com</a> and check your answers</b>		



CP 31

CP 32

CP 33

CP 34

CP 37

CP 39

CP 38

CP 35

CP 36

CP 40

Old Emigrant Trail  
Historical Marker

Badaraco  
Camp

Black  
Butte

Snowshoe Thompson  
Kit Carson  
(Historical  
Monuments)

Woods Lake  
Campground

Picnic  
Area

Lost Cabin  
Mine

Winnemucca  
Lake  
8980

Round Top  
Lake

Round  
Top  
1033

Round Top  
1033

Fourth of July  
Peak  
8538

The Sisters

Coray

Corrie  
Lochan

Carson  
Pass

Grave 1

Eleph  
Spring

NATIONAL

SIERRA  
NEVADA  
NATIONAL  
WILDERNESS

CARSON  
PASS  
NATIONAL  
WILDERNESS

758 759 760 000mE 761 762 763 764 765 766 767 768 769 770 771 772 773 774 775 776 777 778 779 780 781 782 783 784 785 786 787 788 789 790 791 792 793 794 795 796 797 798 799 800 801 802 803 804 805 806 807 808 809 810 811 812 813 814 815 816 817 818 819 820 821 822 823 824 825 826 827 828 829 830 831 832 833 834 835 836 837 838 839 840 841 842 843 844 845 846 847 848 849 850 851 852 853 854 855 856 857 858 859 860 861 862 863 864 865 866 867 868 869 870 871 872 873 874 875 876 877 878 879 880 881 882 883 884 885 886 887 888 889 890 891 892 893 894 895 896 897 898 899 900 901 902 903 904 905 906 907 908 909 910 911 912 913 914 915 916 917 918 919 920 921 922 923 924 925 926 927 928 929 930 931 932 933 934 935 936 937 938 939 940 941 942 943 944 945 946 947 948 949 950 951 952 953 954 955 956 957 958 959 960 961 962 963 964 965 966 967 968 969 970 971 972 973 974 975 976 977 978 979 980 981 982 983 984 985 986 987 988 989 990 991 992 993 994 995 996 997 998 999 1000

4288  
4287  
4286  
4285  
4284  
4283  
4282

10' N  
9' N