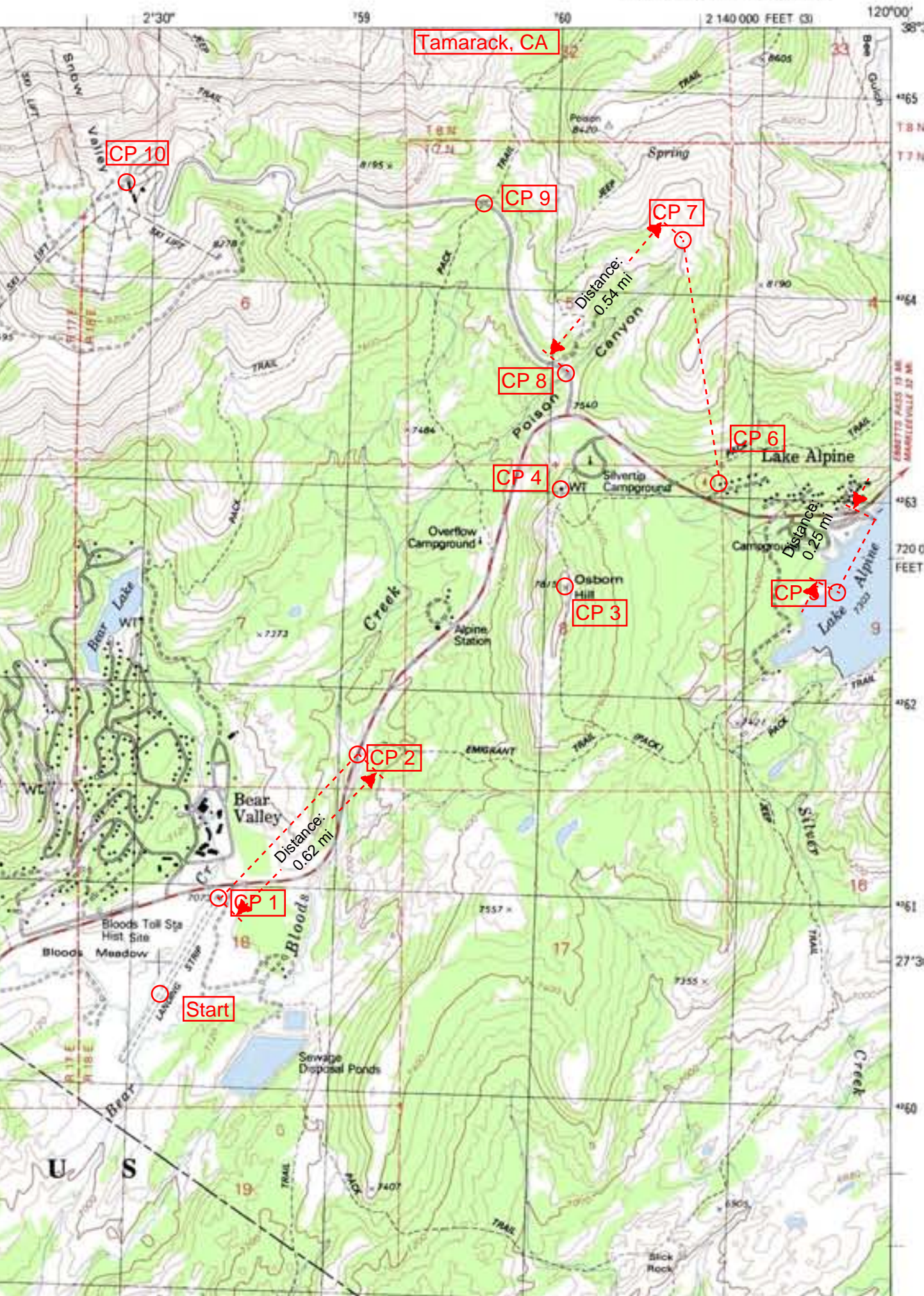


## Challenge 1. - Tamarack, CA

Your Team flies into the landing strip at Bloods Meadow to start the first round of the AR Navigation Supplies Navigation Challenge. After a quick gear check the instructions are handed out and the race starts. Follow these instructions on the map below to complete the challenge. Remember to use Grid North for all bearings.

Check Point #	Instruction	Question	Answer
Start	Find the Bloods Meadow Landing Strip	What is the bearing from Grid North of the landing strip?	29°
CP 1	Find UTM 0758430 4260940	What is the elevation at this location?	7073 feet
CP 2	From CP 1 plot a bearing of 43° for a distance of 0.62 of a mile	What two map features are within feet of this location?	Creek and Trail
CP 3	Take Emigrant Trail to the peak of Osborn Hill	How many contour lines do you cross on this route?	17
CP 4	Find the nearest Water Tower (WT)	What is the UTM of this location?	0760060 4263010
CP 5	Travel by road to the boat ramp on Alpine Lake where you pick up your kayaks and paddle to the largest island in the lake.	What is the bearing and distance of this paddle?	207° 0.25 mile
CP 6	Paddle back to the boat ramp and find the most Westerly building in the town of Alpine Lake	What is the elevation of this building?	7500 feet
CP 7	Travel in a straight line from CP 6 to the top of the creek in Poison Canyon.	How much elevation do you gain on this route?	480 feet
CP 8	Follow the creek in Poison Canyon downstream to the road.	What is the distance in miles to the road?	0.54
CP 9	Follow the road North until it crosses the first Pack Trail	What is the elevation of this trail intersection?	7800 feet
CP 10	Take the road West to Snow Valley Ski Area	How many ski lifts are there?	7
Finish	<b>Go to <a href="http://www.ARNavSupplies.com">www.ARNavSupplies.com</a> and check your answers</b>		



Tamarack, CA

CP 10

CP 9

CP 7

CP 8

CP 6

CP 4

CP 3

CP 5

CP 2

CP 1

Start

Distance:  
0.62 mi

Distance:  
0.54 mi

Distance:  
0.25 mi

