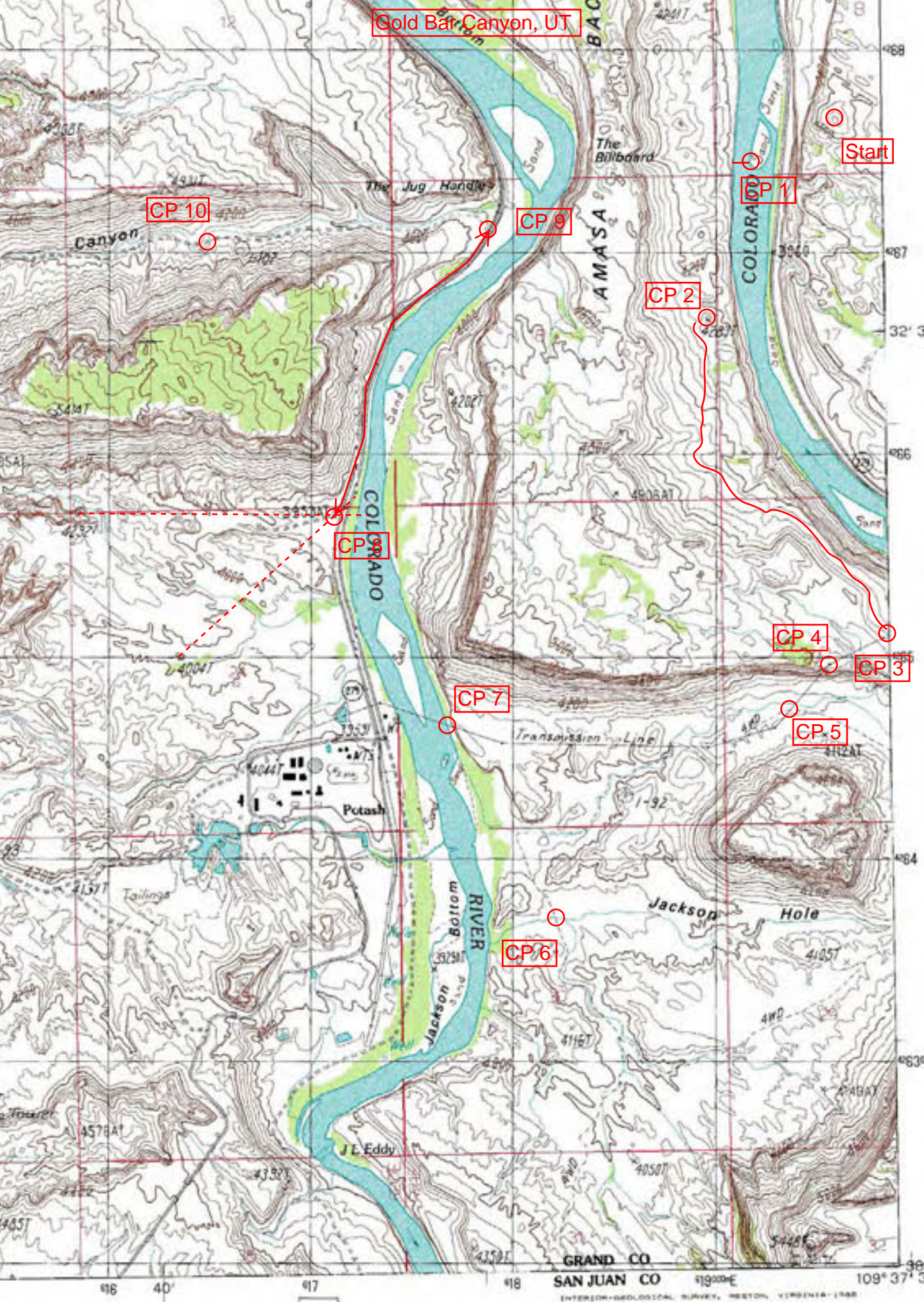


Challenge 9. – Gold Bar Canyon, UT

This round of the Navigation Challenge takes you to the spectacular terrain of Moab for some fun in the canyons and arches. Bring your climbing gear as you'll need it on this course.

Check Point	Instruction	Question	Answer
Start	Find the highest point in grid square 0619 4267	What is the elevation at this point?	4720 feet
CP 1	Cross the river at the sand island in the same grid square.	Using this island what is the width in meters of the narrowest point between the island and the Western shore?	80 meters
CP 2	Plot UTM 0618960 4266670	What is the elevation at this point?	4283 feet
CP 3	Find the flattest route possible to the Eastern most point of the Power Transmission Line.	How many contour lines did you cross?	6
CP 4	Follow the Power Transmission Line West to the first pylon.	What is the UTM of the Eastern most Power Transmission Line pylon?	0619560 4264965
CP 5	Rappel down the cliff face and follow the Transmission Line where it crosses the trail for the first time.	What is the bearing from CP 4 to this point?	222°
CP 6	Follow the trail to where it crosses the stream flowing from Jackson Hole	How many contour lines do you cross between CP 5 and this location?	9
CP 7	Follow the stream to the river and follow the river upstream to the point where the Power Transmission Line crosses the river.	What is the width of the river in meters directly underneath the path of the Power Transmission Line?	280 meters
CP 8	Cross the river under the Power Transmission Line. From the point marked 4004T plot a bearing of 47.5° From the point marked 4292T plot a bearing of 91.5°	What is the elevation at the intersection of these two points?	3953 feet
CP 9	Follow the road North to the trail head at the Jug Handle.	What is the distance from CP 8 to the trail head in miles.	1.04 miles
CP 10	Follow the trail West to the first stream crossing.	What is the UTM of this stream crossing?	0616490 4267060
Finish	Go to www.ARNavigSupplies.com and check your answers		

Gold Bar Canyon, UT



CP 10

CP 8

CP 9

CP 2

CP 4

CP 3

CP 7

CP 5

CP 6

Start

CP 1